

# Your pathway to a new career

## Courses offered:

### BUSINESS

- BSB10120 Certificate I in Workplace Skills
- BSB20120 Certificate II in Workplace Skills
- BSB30120 Certificate III in Business

These courses develop your administrative skills and knowledge to work across different industry sectors.

### CGEA

- 22471VIC Course in Initial General Education for Adults
- 22472VIC Certificate I in General Education for Adults
- 22473VIC Certificate II in General Education for Adults
- 22476VIC Certificate I in General Education for Adults (Intro)

These courses enable you to improve your communication, literacy and numeracy skills.

### COMMUNITY SERVICES

- CHC22015 Certificate II in Community Services

This is an entry level qualification designed for people who want explore care worker roles.

### How to enrol:

You can be referred by WfA, Services Australia, DES, CDP, TTW, or ParentsNext providers.

**Busselton Activity code 100467520.**

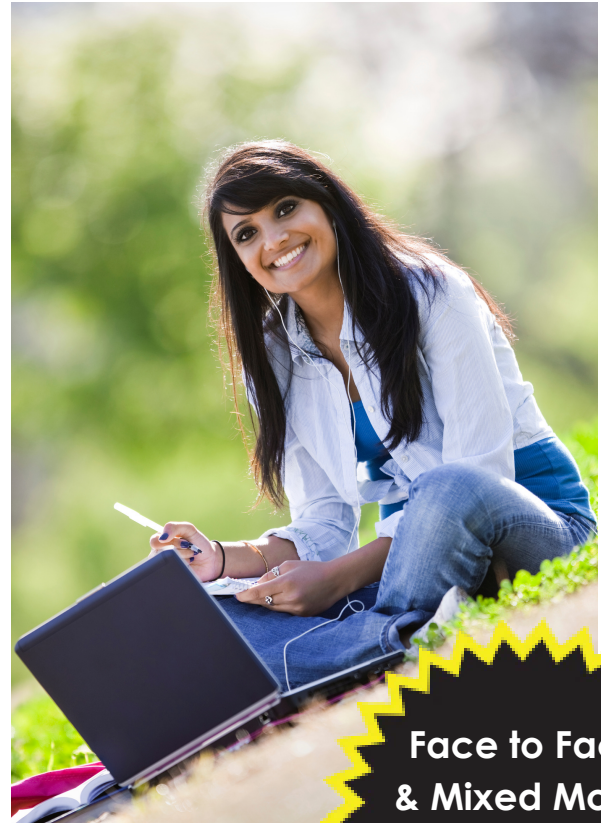
If you are not receiving an income support payment, then contact our SMYL office for **direct registration**.

### To be eligible, you must be:

- aged between 15 years and pension age
- an Australian citizen or permanent resident (or otherwise have working rights in Australia).

### Attend now to:

- Meet all your mutual obligation requirements. **This activity is 25 points per week**, which is your 100 points per month, not even job searching activities will be required.
- **Reduce or pay your court fines.** We will assist you to apply for a Work and Development Permit (WDP) to do this.



**Face to Face  
& Mixed Mode  
delivery options  
available**

### Cost:

- Free

### Course Commences:

- Flexible - Rolling intake - start today!

### Location:

- Unit 1/ 9 Harris Road, Busselton

### Email:

- DeniceB@smyl.com.au

**0422 183 547**

**Child friendly  
learning space  
available**